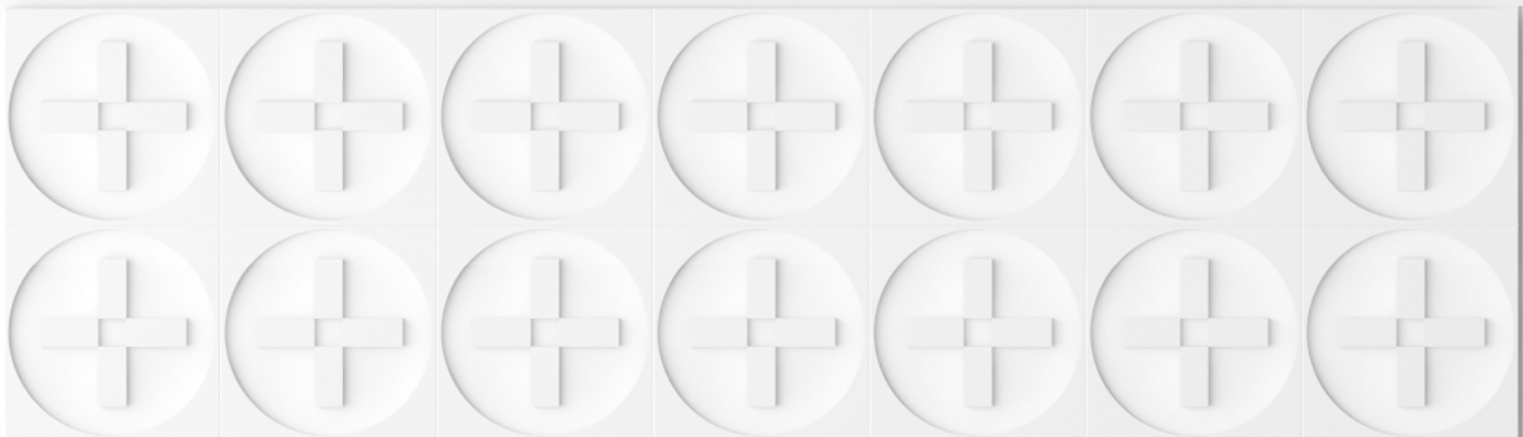


「 **ADD** | INNOVATION  
+ SUPPLIER 」

CATALOG 2021  
**MAGNETIC TRACK LIGHTING**





ADD is not only a modern lighting technology, energy savings, ecology, design but most of all a cooperation of people of different cultures. We provide specialists who want to become our team partners with innovative and reliable solutions. We build our relations with the aim of achieving a long-term success.

Fresh view at the technical aspects that are crucial for both mounters and users gives us the opportunity to offer original and state-of-the-art solutions. A simple form and solid materials are key advantages that allow designers to create a modern space through the light and the form of fixtures. Our wide range of product lines and collections help designers to create perfect compositions.

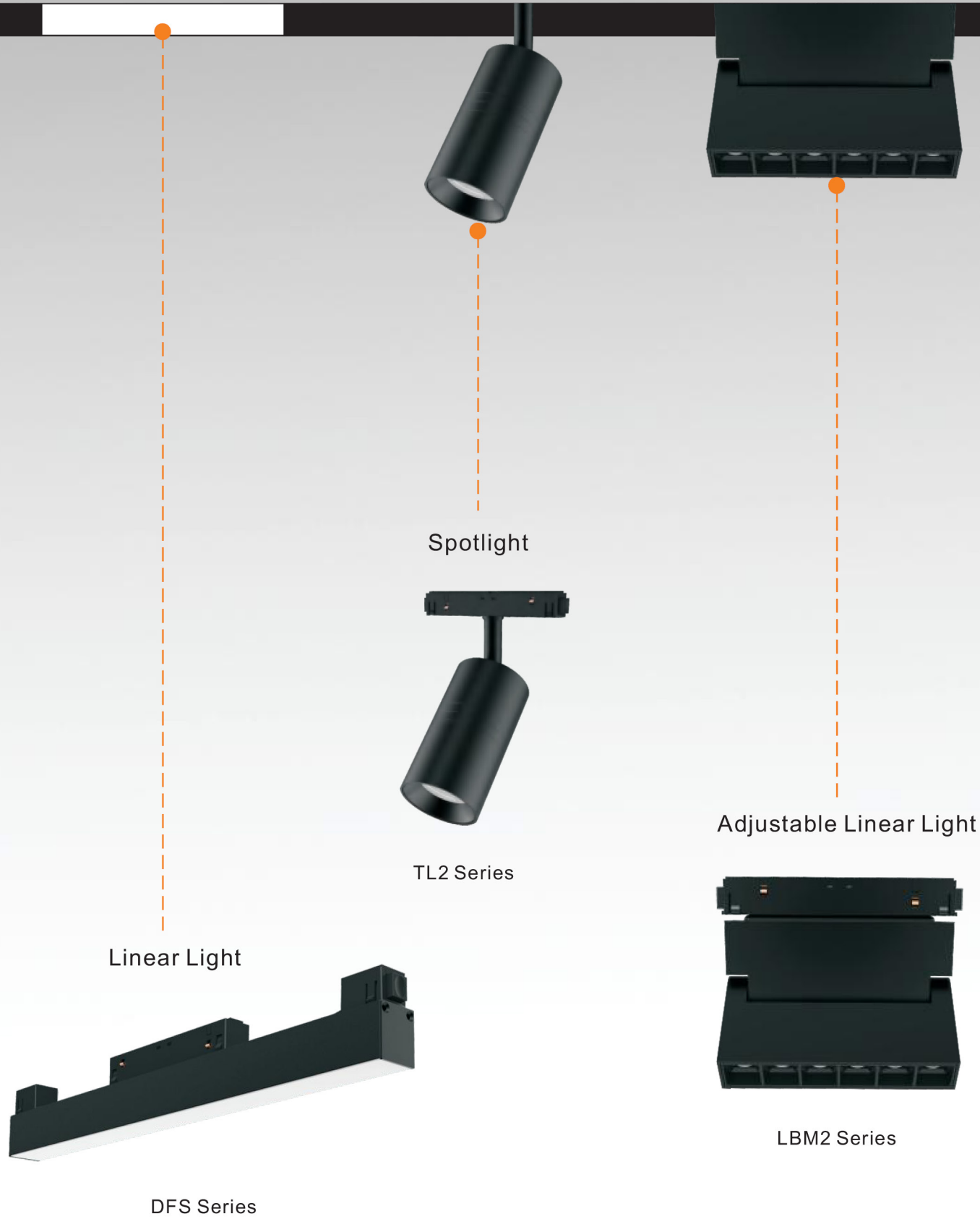
***WE INVITE YOU TO COOPERATE WITH US ON YOUR PROJECTS***

*ADD Team*



[www.addsupplier.com](http://www.addsupplier.com)

# 48V Low Voltage Magnet Track Light System



# 48V Low Voltage Magnet Track Light System



Linear Light



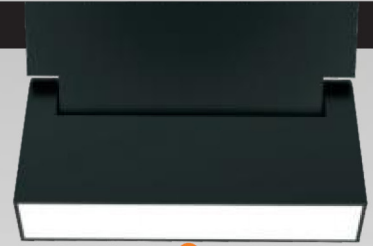
LB Series



Droplight



FM Series



Adjustable Linear Light



DFSM2 Series





# Track Spotlight

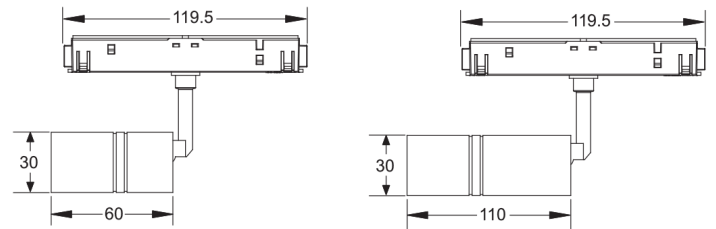
TL2 Series



## Features

- High luminance, high efficiency, without radiation, pure color, energy saving and environmental protection LED illuminants.
- Extreme aesthetics and unique optical design, advanced processing for surface of lamp body, compact and optimized structure, tiny and fine appearance.
- high-quality aluminum tracks, multifunctional mounting structure, distinctive solution in seamlessly connecting accessories.
- Strong magnetic adsorption, simple, flexible and convenient operating.
- 0-10V Dimming and DALI Dimming control, can freely adjust lamp luminance, energy saving and environmental protection.

## Dimension



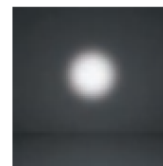
M20-TL2-3W

M20-TL2-5W

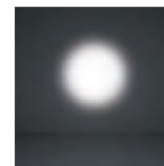
## Parameters

Model : KS-M20-TL2-3/5  
 Power : 3W/5W  
 Beam Angle : 10°/15°/20°  
 CRI :  $\geq 90$   
 CCT : 3000K/4000K/5000K  
 Dim mode : 0-10V/DALI/2.4G  
 Input Voltage : DC48V  
 Color : Black/White

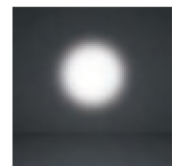
## Opticas



Spot  
 $\alpha 10^\circ$



Medium  
 $\alpha 15^\circ$



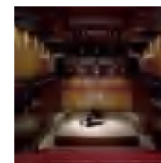
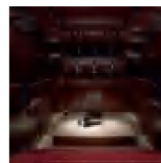
Medium  
 $\alpha 20^\circ$

## Dimmer

**DALI**

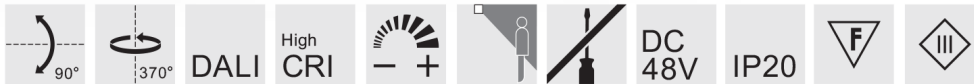
Digital adressable lighting interface this technology allows both energy saving and the possibility of customised lighting.

DALI Protocol





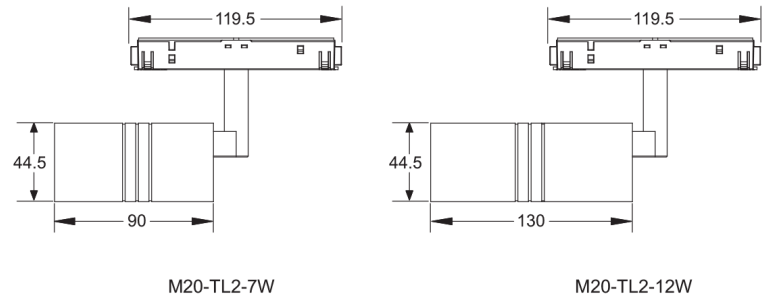
# Track Spotlight



## Features

- High luminance, high efficiency, without radiation, pure color, energy saving and environmental protection LED illuminants.
- Extreme aesthetics and unique optical design, advanced processing for surface of lamp body, compact and optimized structure, tiny and fine appearance.
- high-quality aluminum tracks, multifunctional mounting structure, distinctive solution in seamlessly connecting accessories.
- Strong magnetic adsorption, simple, flexible and convenient operating.
- 0-10V Dimming and DALI Dimming control, can freely adjust lamp luminance, energy saving and environmental protection.

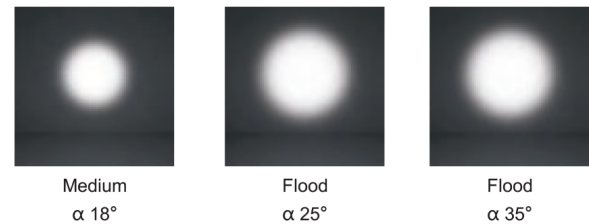
## Dimension



## Parameters

Model : KS-M20-TL2-7/12  
 Power : 7W/12W  
 Beam Angle : 18°/25°/35°  
 CRI : ≥90  
 CCT : 3000K/4000K/5000K  
 Dim mode : 0-10V/DALI/2.4G  
 Input Voltage : DC48V  
 Color : Black/White

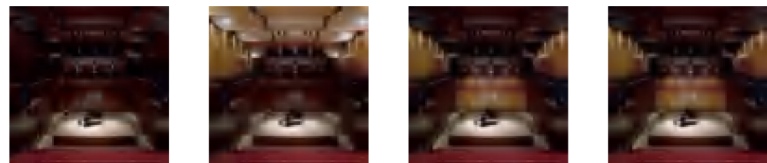
## Opticas



## Dimmer

**DALI** Digital addressable lighting interface this technology allows both energy saving and the possibility of customised lighting.

DALI Protocol



● Due to special conditions to LED product manufacturing, above technical parameters only indicates statistics. A single product with the actual parameters may have a little difference.  
 ● Over maximum operating voltage will arise dangerous overload and damage LED module

● More than limited operating temperature or storage temperature of product will shorten product's lifespan or damage LED module.  
 ● Owing to cooling characteristic of LED product, which prohibits covering with heat insulation materials on the surface.





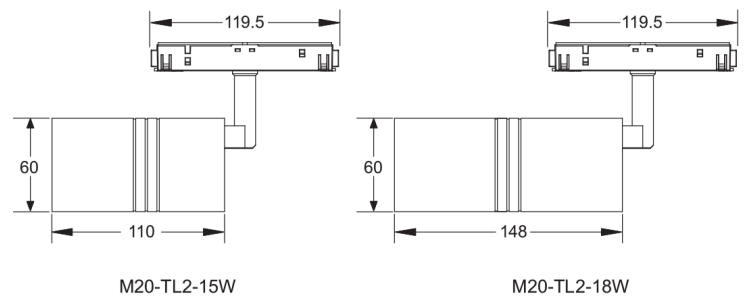
# Track Spotlight



## Features

- High luminance, high efficiency, without radiation, pure color, energy saving and environmental protection LED illuminants.
- Extreme aesthetics and unique optical design, advanced processing for surface of lamp body, compact and optimized structure, tiny and fine appearance.
- high-quality aluminum tracks, multifunctional mounting structure, distinctive solution in seamlessly connecting accessories.
- Strong magnetic adsorption, simple, flexible and convenient operating.
- 0-10V Dimming and DALI Dimming control, can freely adjust lamp luminance, energy saving and environmental protection.

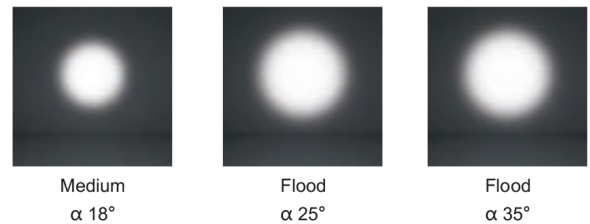
## Dimension



## Parameters

Model : KS-M20-TL2-15/18  
 Power : 15W/18W  
 Beam Angle : 18°/25°/35°  
 CRI : ≥90  
 CCT : 3000K/4000K/5000K  
 Dim mode : 0-10V/DALI/2.4G  
 Input Voltage : DC48V  
 Color : Black/White

## Opticas

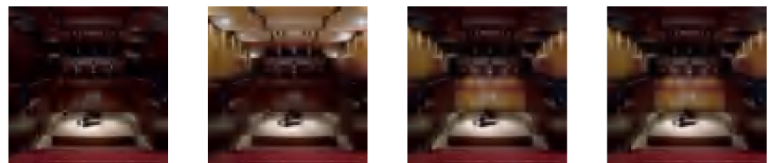


## Dimmer

**DALI**

Digital adressable lighting interface this technology allows both energy saving and the possibility of customised lighting.

DALI Protocol





# Track Droplight

FM Series



## Features

- High luminance, high efficiency, without radiation, pure color, energy saving and environmental protection LED illuminants.
- Extreme aesthetics and unique optical design, advanced processing for surface of lamp body, compact and optimized structure, tiny and fine appearance.
- high-quality aluminum tracks, multifunctional mounting structure, distinctive solution in seamlessly connecting accessories.
- Strong magnetic adsorption, simple, flexible and convenient operating.
- 0-10V Dimming and DALI Dimming control, can freely adjust lamp luminance, energy saving and environmental protection.

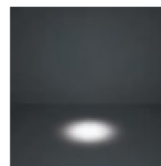
## Dimension



## Parameters

Model : KS-M20-FM-9  
Power : 9W  
Beam Angle : 24°/36°  
CRI : ≥90  
CCT : 3000K/4000K/5000K  
Dim mode : 0-10V/DALI/2.4G  
Input Voltage : DC48V  
Color : Black/White

## Opticas



Medium  
 $\alpha 24^\circ$



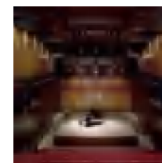
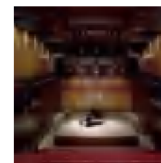
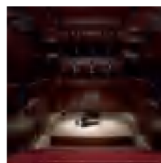
Flood  
 $\alpha 36^\circ$

## Dimmer

**DALI**

Digital addressable lighting interface this technology allows both energy saving and the possibility of customised lighting.

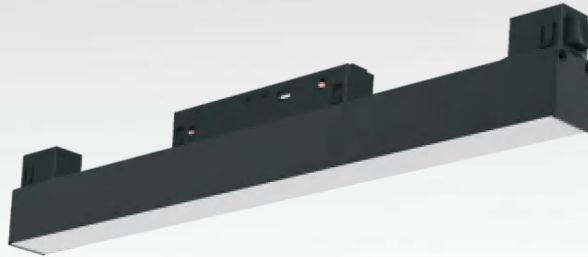
DALI Protocol





# Track Linear Light

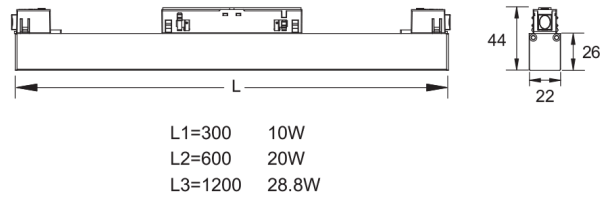
DFS Series



## Features

- High luminance, high efficiency, without radiation, pure color, energy saving and environmental protection LED illuminants.
- Extreme aesthetics and unique optical design, use high transparent PMMA cover, uniformed and soft lighting without glare.
- high-quality aluminum tracks, multifunctional mounting structure, distinctive solution in seamlessly connecting accessories.
- Strong magnetic adsorption, simple, flexible and convenient operating.
- 0-10V Dimming and DALI Dimming control, can freely adjust lamp luminance, energy saving and environmental protection.

## Dimension



## Parameters

Model : KS-M20-DFS-10/20/28.8  
Power : 10W/20W/28.8W  
Beam Angle : 120°  
CRI : ≥90  
CCT : 3000K/4000K/5000K  
Dim mode : 0-10V/DALI/2.4G  
Input Voltage : DC48V  
Color : Black/White

## Opticas

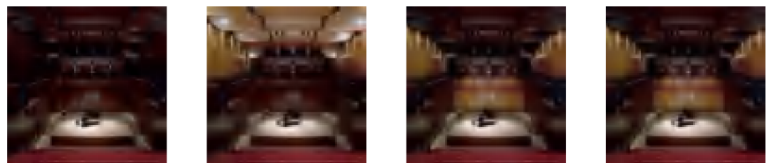


Wide Flood  
 $\alpha$  120°

## Dimmer

**DALI** Digital adressable lighting interface this technology allows both energy saving and the possibility of customised lighting.

DALI Protocol



● Due to special conditions to LED product manufacturing, above technical parameters only indicates statistics. A single product with the actual parameters may have a little difference.  
● Over maximum operating voltage will arise dangerous overload and damage LED module

● More than limited operating temperature or storage temperature of product will shorten product's lifespan or damage LED module.  
● Owing to cooling characteristic of LED product, which prohibits covering with heat insulation materials on the surface.



# Track Adjustable Linear Light

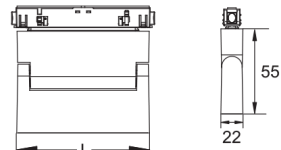
DFSM2 Series



## Features

- High luminance, high efficiency, without radiation, pure color, energy saving and environmental protection LED illuminants.
- Extreme aesthetics and unique optical design, use high transparent PMMA cover, uniformed and soft lighting without glare.
- high-quality aluminum tracks, multifunctional mounting structure, distinctive solution in seamlessly connecting accessories.
- Strong magnetic adsorption, simple, flexible and convenient operating.
- 0-10V Dimming and DALI Dimming control, can freely adjust lamp luminance, energy saving and environmental protection.

## Dimension



L1=200 6W  
L2=300 12W

## Parameters

Model : KS-M20-DFSM2-6/12  
Power : 6W/12W  
Beam Angle : 120°  
CRI : ≥90  
CCT : 3000K/4000K/5000K  
Dim mode : 0-10V/DALI/2.4G  
Input Voltage : DC48V  
Color : Black/White

## Opticas



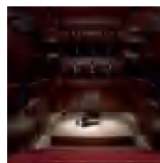
Wide Flood  
 $\alpha 120^\circ$

## Dimmer

**DALI**

Digital adressable lighting interface this technology allows both energy saving and the possibility of customised lighting.

DALI Protocol

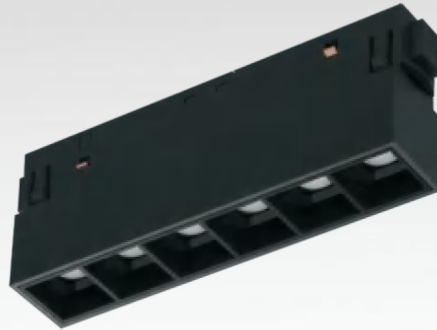






# Track Linear Light

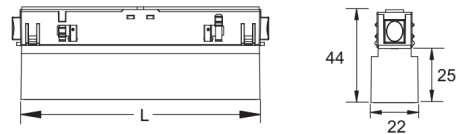
LB Series



## Features

- High luminance, high efficiency, without radiation, pure color, energy saving and environmental protection LED illuminants.
- Extreme aesthetics and unique optical design, advanced processing for surface of lamp body, compact and optimized structure, tiny and fine appearance.
- high-quality aluminum tracks, multifunctional mounting structure, distinctive solution in seamlessly connecting accessories.
- Strong magnetic adsorption, simple, flexible and convenient operating.
- 0-10V Dimming and DALI Dimming control, can freely adjust lamp luminance, energy saving and environmental protection.

## Dimension

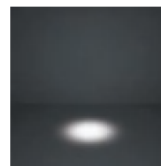


L1=113 6W  
L2=226 12W

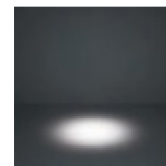
## Parameters

Model : KS-M20-LB-6/12  
Power : 6W/12W  
Beam Angle : 24°/36°  
CRI : ≥90  
CCT : 3000K/4000K/5000K  
Dim mode : 0-10V/DALI/2.4G  
Input Voltage : DC48V  
Color : Black/White

## Opticas



Medium  
 $\alpha 24^\circ$



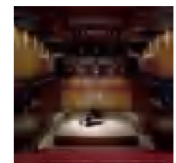
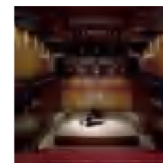
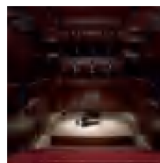
Flood  
 $\alpha 36^\circ$

## Dimmer

DALI

Digital adressable lighting interface this technology allows both energy saving and the possibility of customised lighting.

DALI Protocol





# Track Adjustable Linear Light

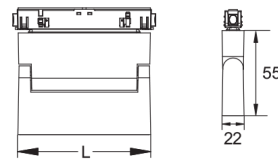
LBM2 Series



## Features

- High luminance, high efficiency, without radiation, pure color, energy saving and environmental protection LED illuminants.
- Extreme aesthetics and unique optical design, advanced processing for surface of lamp body, compact and optimized structure, tiny and fine appearance.
- high-quality aluminum tracks, multifunctional mounting structure, distinctive solution in seamlessly connecting accessories.
- Strong magnetic adsorption, simple, flexible and convenient operating.
- 0-10V Dimming and DALI Dimming control, can freely adjust lamp luminance, energy saving and environmental protection.

## Dimension

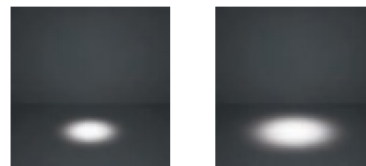


L1=113 6W  
L2=226 12W

## Parameters

Model : KS-M20-LBM2-6/12  
Power : 6W/12W  
Beam Angle : 24°/36°  
CRI : ≥90  
CCT : 3000K/4000K/5000K  
Dim mode : 0-10V/DALI/2.4G  
Input Voltage : DC48V  
Color : Black/White

## Opticas



Medium  
 $\alpha$  24°

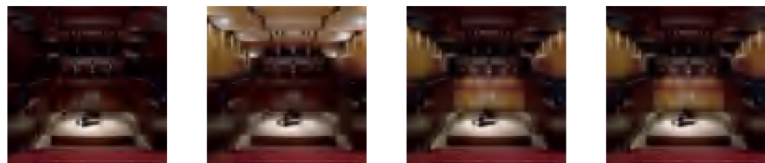
Flood  
 $\alpha$  36°

## Dimmer

DALI

Digital addressable lighting interface this technology allows both energy saving and the possibility of customised lighting.

DALI Protocol

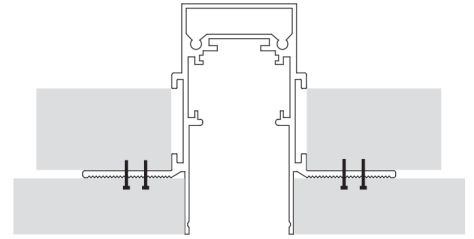
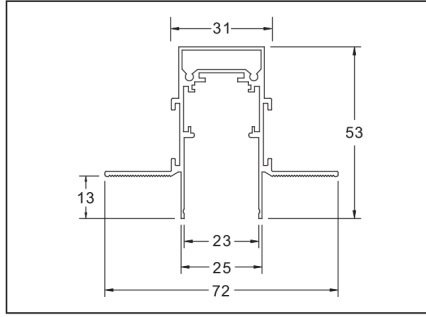


- Due to special conditions to LED product manufacturing, above technical parameters only indicates statistics. A single product with the actual parameters may have a little difference.
- Over maximum operating voltage will arise dangerous overload and damage LED module

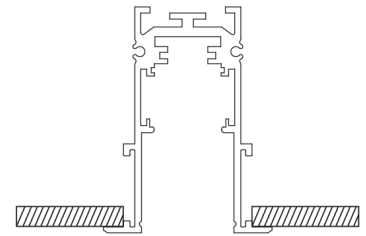
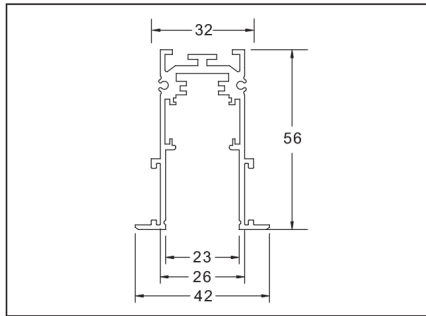
- More than limited operating temperature or storage temperature of product will shorten product's lifespan or damage LED module.
- Owing to cooling characteristic of LED product, which prohibits covering with heat insulation materials on the surface.

# 48V Low Voltage Magnet Track System

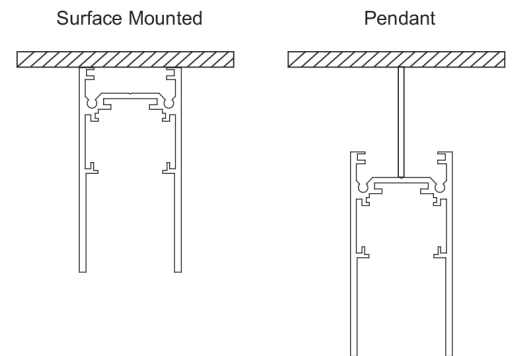
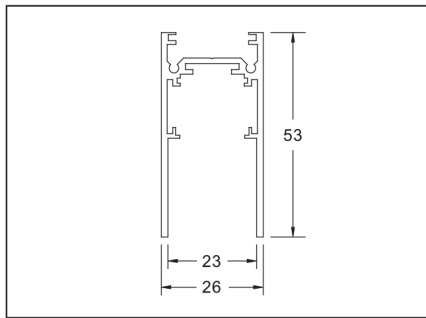
## Magnet Trimless Recessed Track



## Magnet Recessed Track

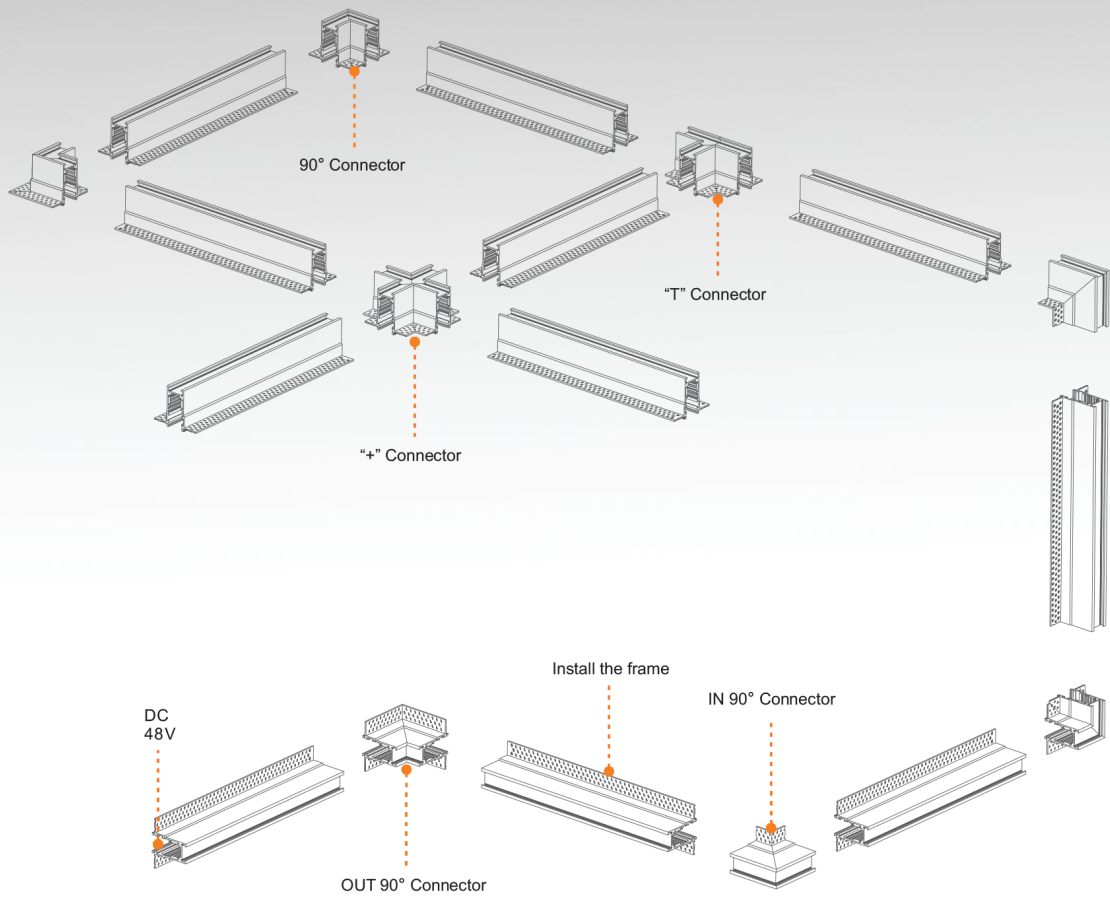


## Magnet Track (Multi-function)

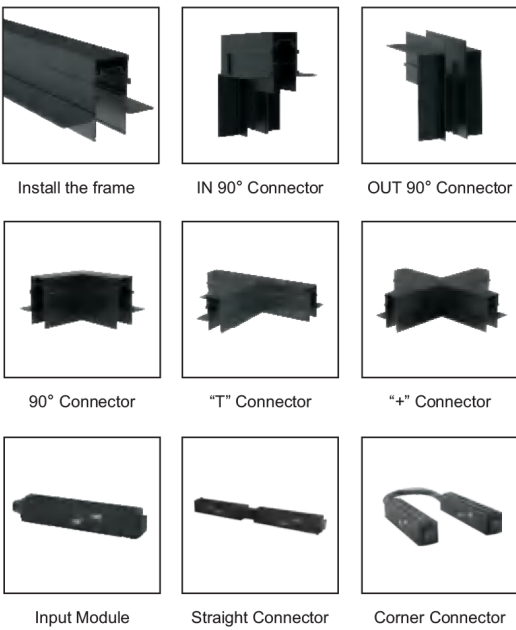


Note: The length of magnetic track strip can be customized

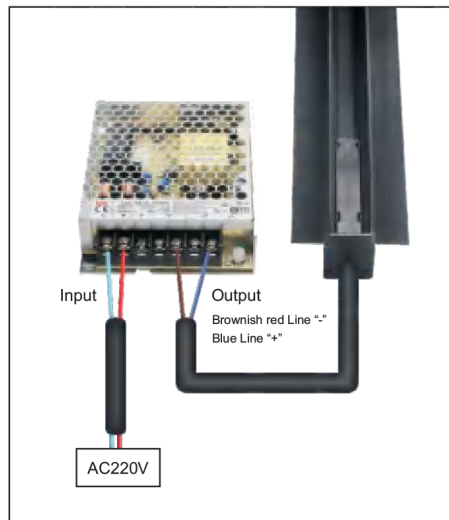
# Magnet Trimless Recessed Track Installation Diagram



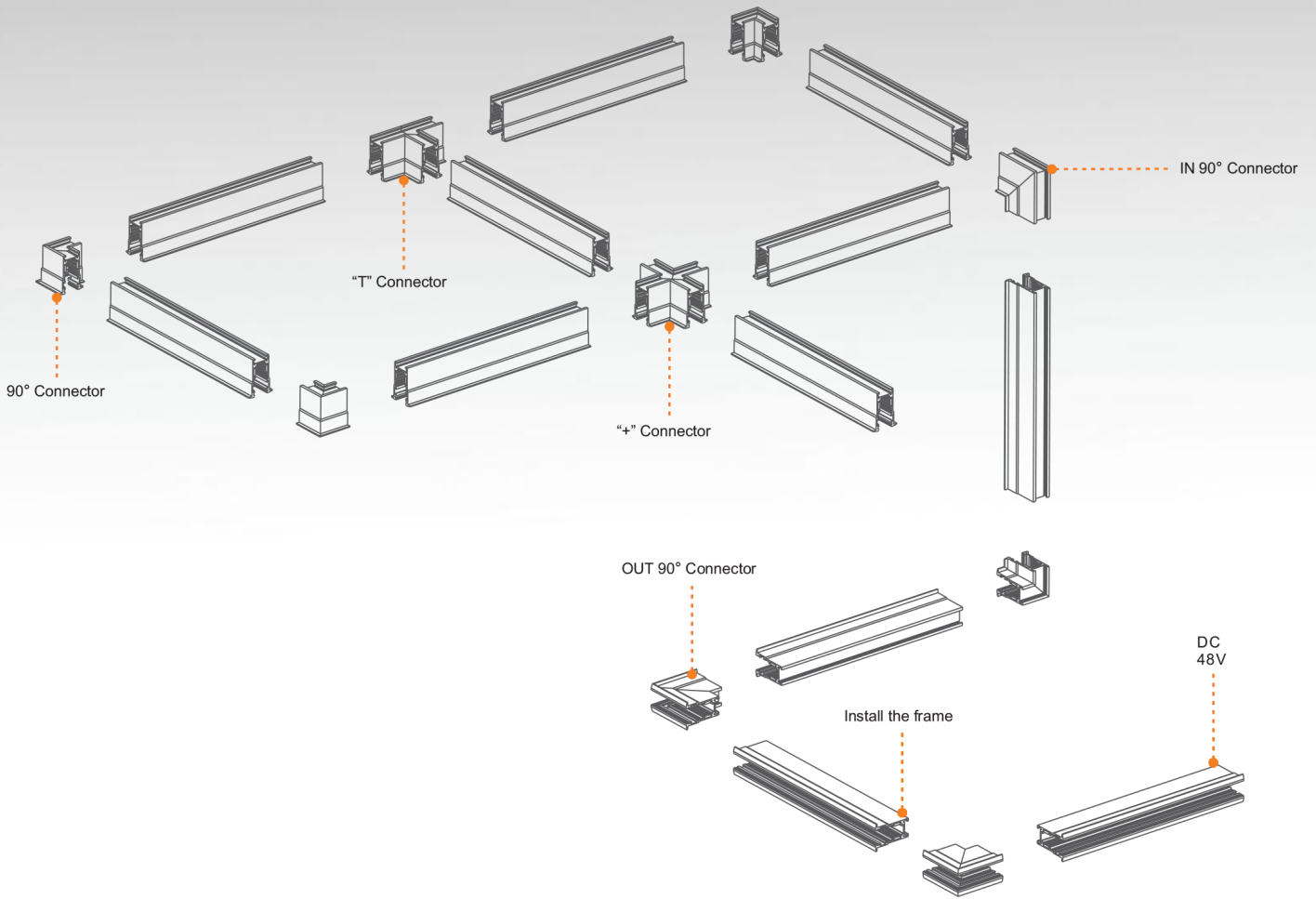
## Accessories



## Transformer Installation Methods



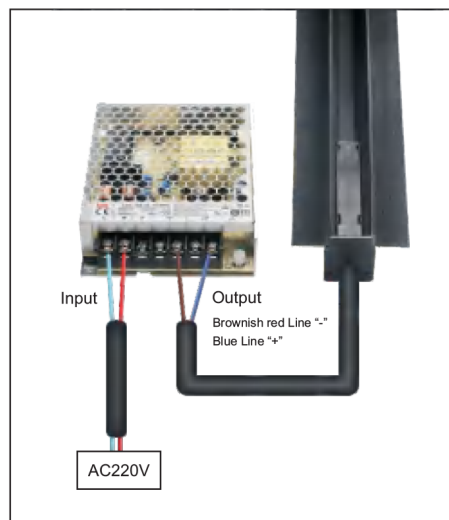
# Magnet Recessed Track Installation Diagram



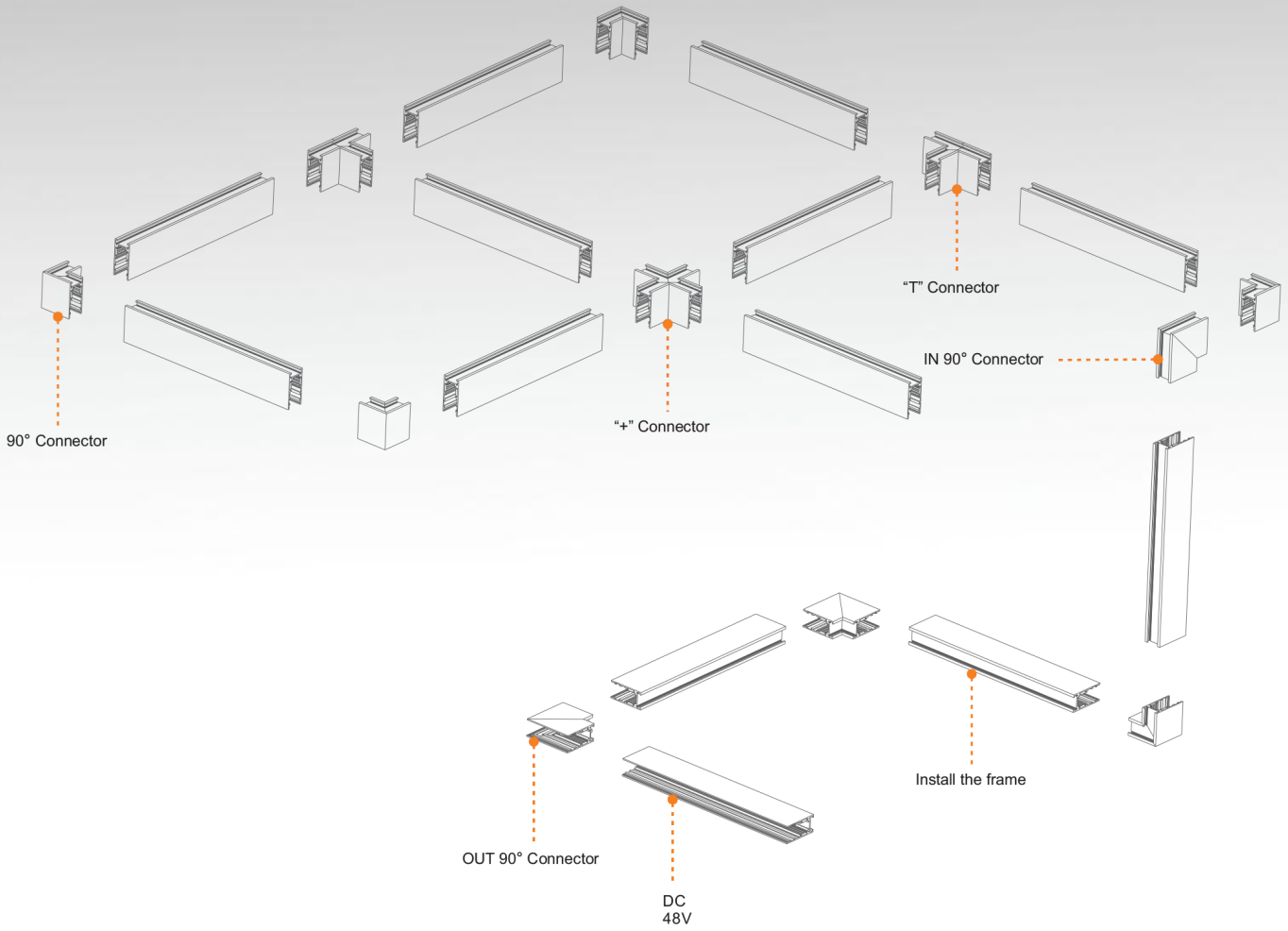
## Accessories



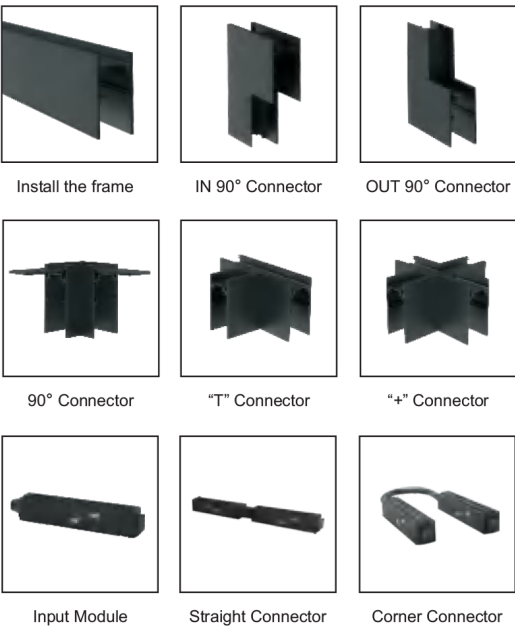
## Transformer Installation Methods



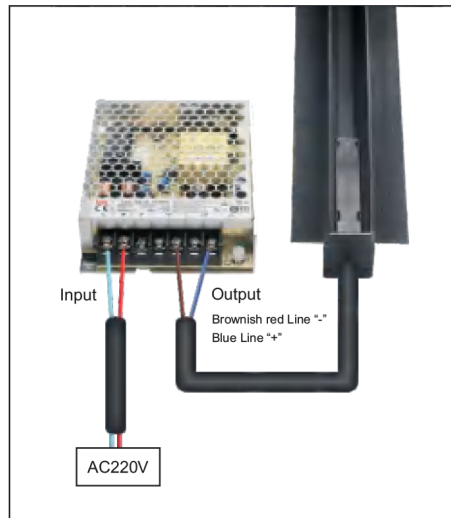
# Magnet Surface Track Installation Diagram



## Accessories



## Transformer Installation Methods







“Legal Notice”

Due to continuous product development ADD Sp.z o.o. reserves the right to modify, upgrade or change product versions without prior notice. Visualizations or photos of products may differ in detail from the actual products. Information contained in this catalog may contain technical inaccuracies or typographical errors. Every effort has been made to provide current, accurate and reliable information in the product catalog. The catalog is made public without any guarantee or warranty. In no event shall ADD sp. z o.o. be liable to anyone for any direct, indirect, consequential or other damages whatsoever resulting from any use of the catalog. The catalog serves as a general presentation of the offer and the basis for the execution of contracts is exclusively a binding offer prepared by the sales department of ADD sp. z o.o.

**ADD** sp. z o.o.

Grodziska 15 Street

05830 Stara Wies

Poland

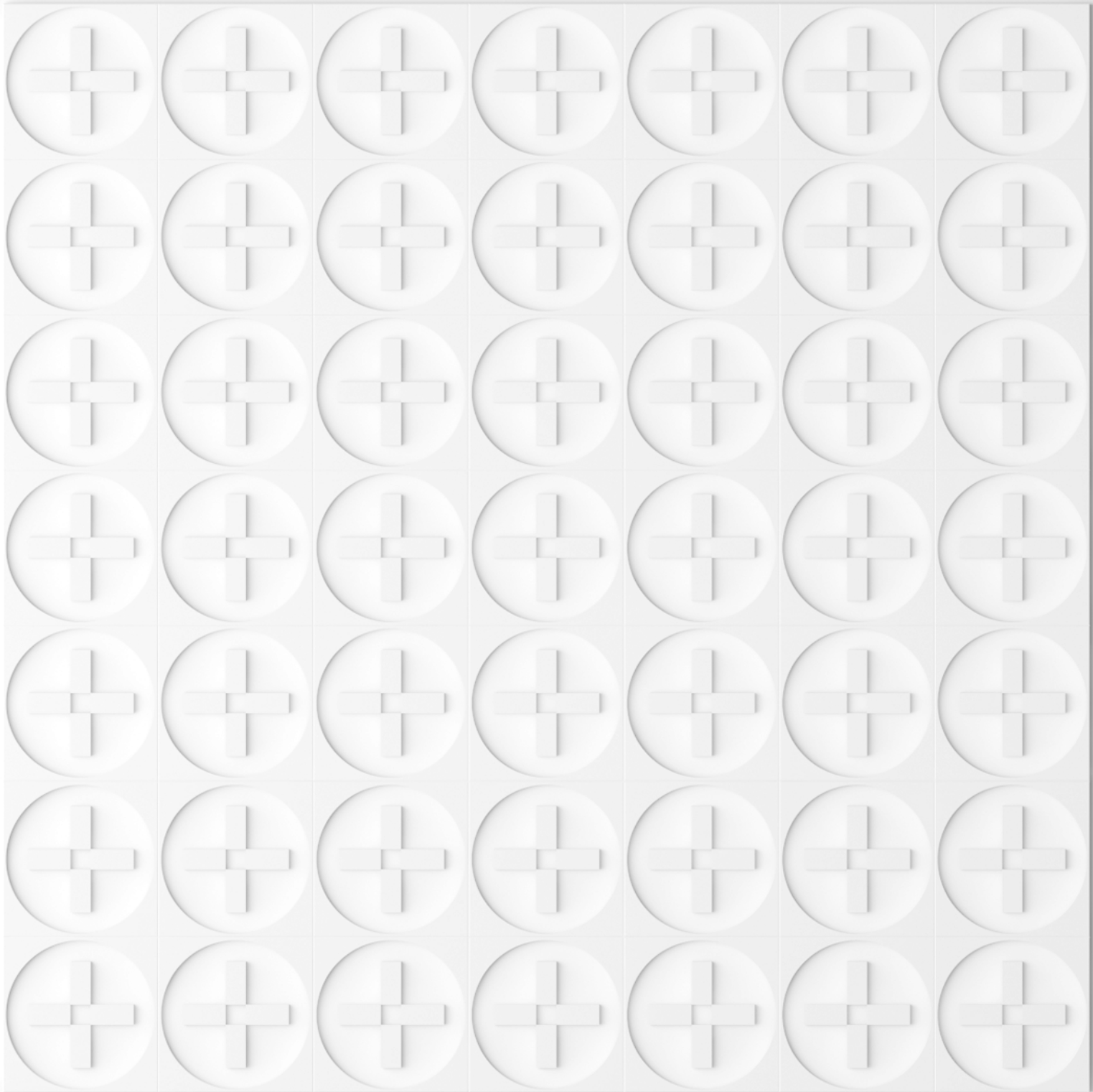
TAX number: PL 5342614788

mobile: +48 660 099 951

email: [adam.ducek@addsupplier.com](mailto:adam.ducek@addsupplier.com)



[www.addsupplier.com](http://www.addsupplier.com)



[www.addsupplier.com](http://www.addsupplier.com)

